



# Transit Around the Nation II: Portland, Oregon

Rose Carter,  
Boyd-Booth Concerned Citizens  
& Bertha Nixon, for moral support  
and collaborator



# Portland: Lessons Learned and Opportunities for Baltimore

- Have honest and open discussions with the communities about what to really expect and what are the real impacts.
- Have liaisons for the communities and businesses 24/7. Set up an office in the construction area.



# Portland: Lessons Learned and Opportunities for Baltimore

- Admit the mistake that was made on the first light rail to avoid misinformation & distrust with this project.
- It is very important to include the communities as a partner and involve (residents) in such a way that they feel connected to the project.

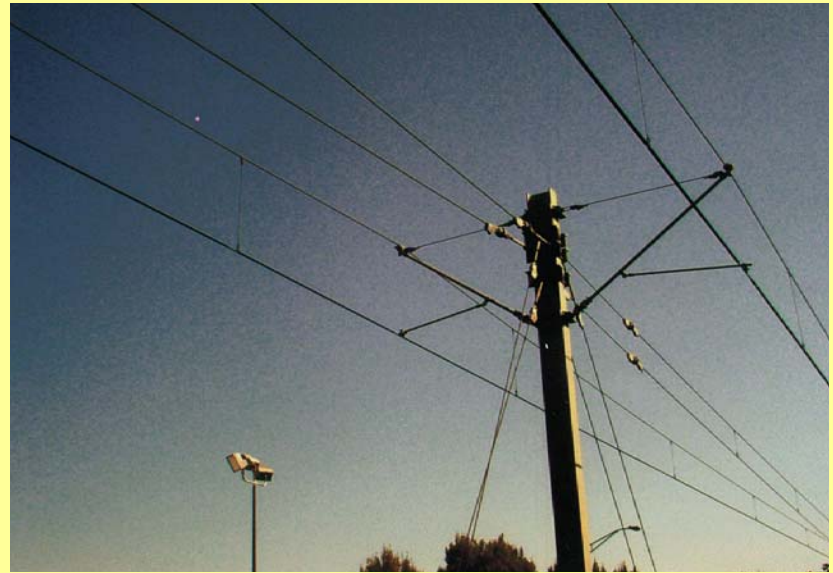
# Portland: Lessons Learned and Opportunities for Baltimore

- Have the train track level to the ground so that the cars and people can cross over with no difficulties.



# Portland: Lessons Learned and Opportunities for Baltimore

- The over head wires were just in the center of the road where the train. Was not all over the entire street.





# Portland: Lessons Learned and Opportunities for Baltimore

- Explain the difference between surface versus tunnel the cost related to it (the problems involved)
  - All areas can't be a tunnel and some areas will have to be surface.
  - Surface trains or buses will provide more beautification, new construction of houses & businesses; new street, light, etc.
  - Versus tunnel in the ground with less vision of your community.



# Portland: Lessons Learned and Opportunities for Baltimore

- When the community has all the facts, positive and negative, about surface versus tunnel, they need to decide what type of transit will benefit their community.
- Make sure that the transit can accommodate bikes or have bike lockers available.



# Portland: Lessons Learned and Opportunities for Baltimore

- They have a beautification program and art work around all train and buses on the surface.
- We want to be sure that job training is provided to all communities involve in the redline project areas.